

GalvinSafe[®] Eye/Face Wash, Wall Mtd, Hand Activated, Axion[®] MSR Head & S/Steel Bowl (HAWS)

PRODUCT CODE:

Galvin Engineering: 190.42.11.12

HAWS: 7778B-A



PRE - INSTALLATION

LOCATION OF UNIT: The Model 190.42.11.12 (7778B-A) Eye/Face Wash should be installed in close proximity to potential accident areas. It should be clearly identified, free from obstructions and easy to access.

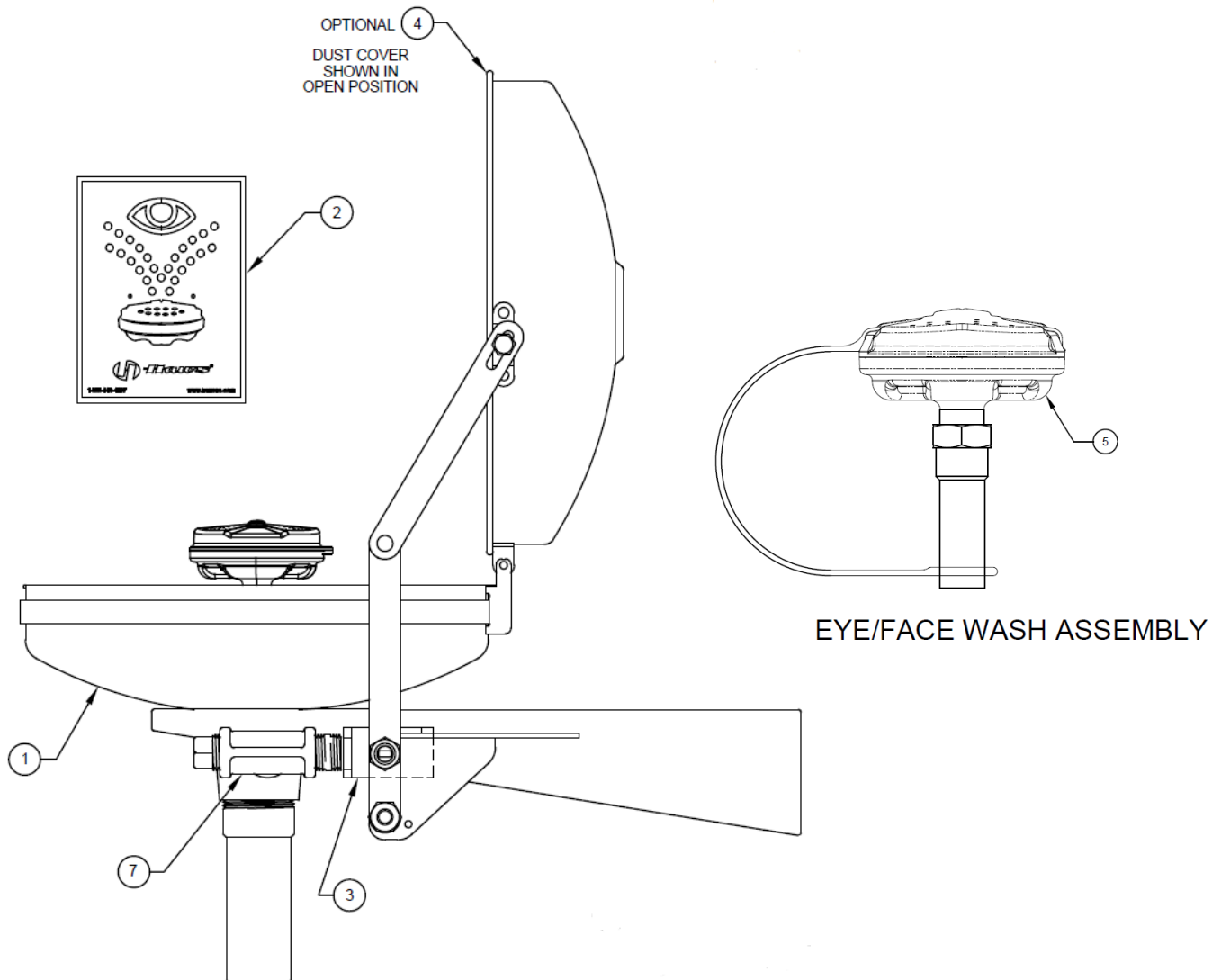
SUPPLY LINE: The minimum recommended line size is 1/2" BSP with 210 – 600 kPa flowing pressure. Where sediment or mineral content is a problem, an inlet filter is recommended.

PLUMBING CONNECTIONS: Inlet supply is female 1/2" BSPP. Waste outlet is male 1-1/4" BSPT.

INSTALLATION

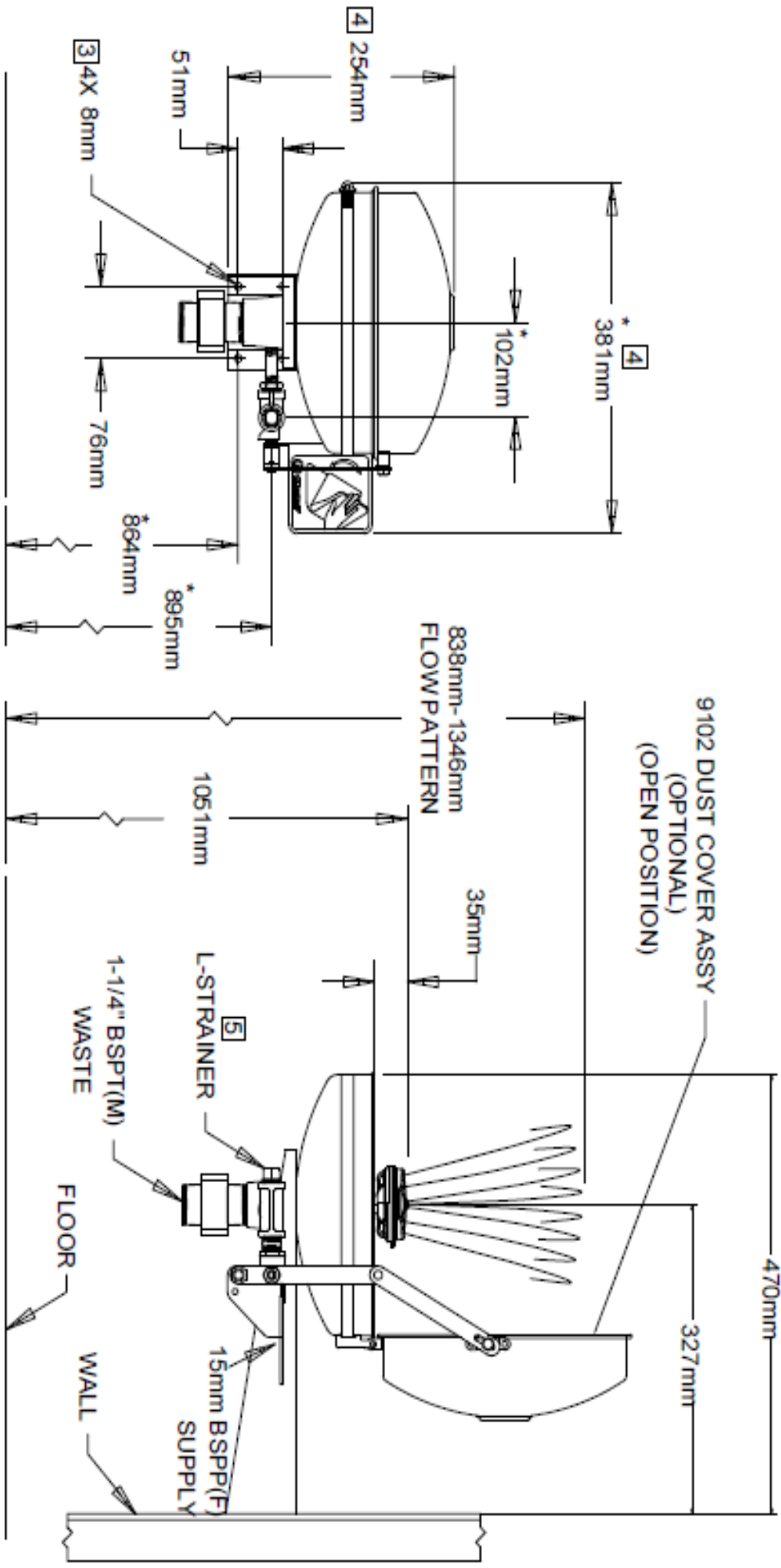
Refer to installation drawing to clarify installation procedure.

PARTS BREAKDOWN



ITEM	ITEM CODE	ITEM DESCRIPTION
1	190.92.22.20	GALVINSAFE SS304 EYEWASH BOWL (HAWS)
2	190.91.12.32	EMERGENCY EYE WASH SIGN - 270X200
3	190.92.41.30	GALVINSAFE SS316 EYEWASH VALVE PLUS PUSH FLAG (HAWS)
4	-	DUST COVER ASSEMBLY* (OPTIONAL)
5	190.92.12.10	EYE/FACE WASH ASSEMBLY
6	190.91.80.33	TEST TAG
7	-	L-STRAINER*

* spare part will require special order or may not be available (contact Galvin engineering for more details).



NOTES:

1. WHEN INSTALLING THIS UNIT, LOCAL, STATE, OR FEDERAL CODES SHOULD BE ADHERED TO FOR INSTALLATION DIMENSIONS (LOCATIONS), WASTE AND SUPPLY REQUIREMENTS OTHER THAN SHOWN.
2. TO COMPLETE WITHAS 4775:
EYEWASH OR EYE/FACE WASH SHALL BE POSITIONED SUCH THAT FLUSHING FLUID PATTERN IS NOT LESS THAN 838mm AND NO GREATER THAN 1346mm FROM SURFACE ON WHICH USER STANDS; AND 153mm MINIMUM FROM WALL OR NEAREST OBSTRUCTION.
3. MOUNTING HARDWARE SUPPLIED BY OTHERS.
4. DIM APPLIES WHEN OPTIONAL 9102 DUST COVER ASSEMBLY IS USED.
5. REMOVE 19mm NPT PLUG TO GAIN ACCESS TO STRAINER FOR CLEANING. WHEN RE-ASSEMBLING STRAINER AND PLUG, MAKE SURE THAT STRAINER IS FULLY PRESSED INTO PLUG CAVITY, PRIOR TO THREADING PLUG INTO TEE.
6. DIMENSIONS MAY VARY BY ±13 mm.

DISTRIBUTED BY:

GalvinEngineering
the mark of reliability

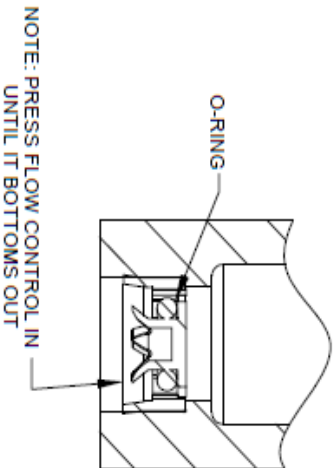
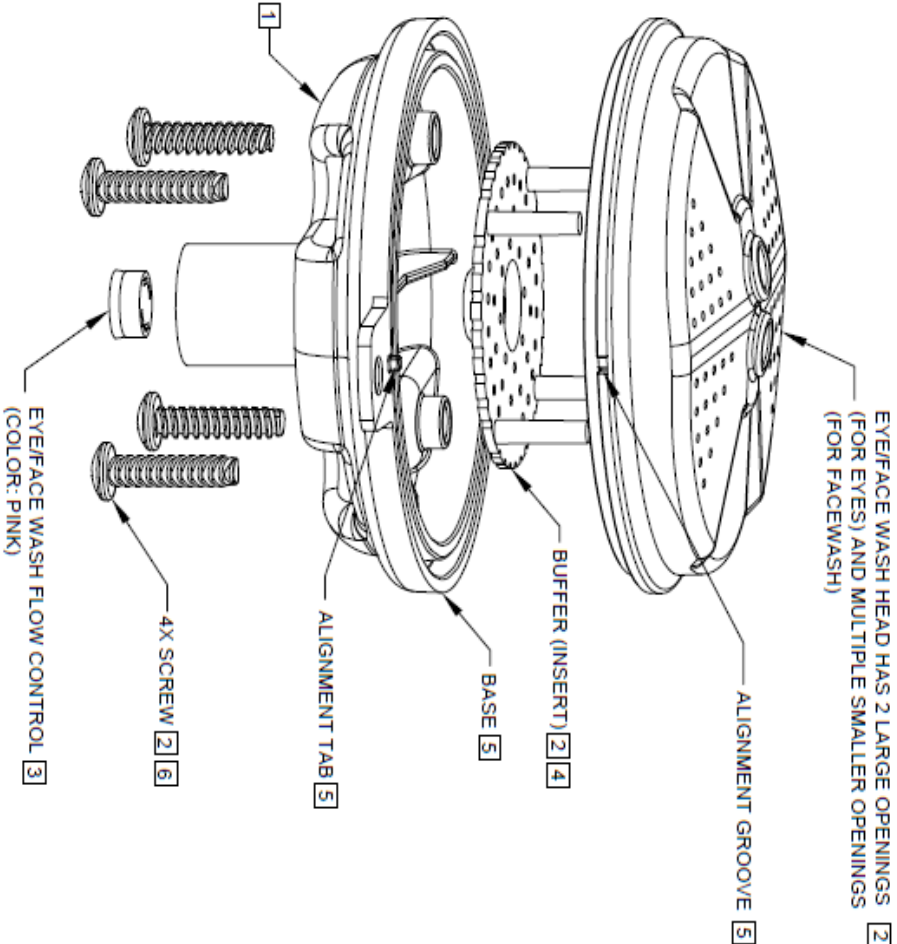
410 VICTORIA RD WULAGA WA
ASB 78 008 719382
+61 8 9338 2344 FAX +61 8 9338 2340
EMAIL: info@galvinengineering.com.au
WEBSITE: www.galvinengineering.com.au



TECH NO	REVISED DATE	BY	MO DEL(S)	190.42.11.12 (7778B-A)	WAT NUMBER
DRAWN	DATE	CHK'D	GALVINSAFE ET/SR/FACE WASH, WALL MTD.		00020380103.D
C.L.	09/01	GP	HAND ACTIVATED, AXIOM MSR HEAD & STEEL BOWL (HAWMS)		REVISION
APPROVED	DATE		DESIGNER		17
NO	03/27/20		SCALE	1:1	SHEET 1 OF 1

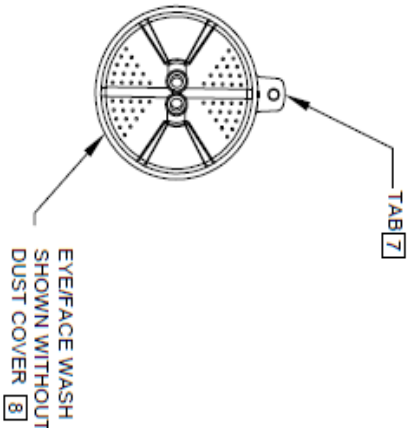
TROUBLESHOOTING	
PROBLEM	REPAIR CHECKLIST
1. No Flow.	1. Check the main shut-off valve.
2. Insufficient water flow	2. a. Verify minimum 210 kPa flowing supply line pressure b. Probable clogging of flow control due to inadequate line flushing. Unscrew eye/face wash head and remove the four screws to disassemble head. Clean flow control and reassemble Head. See next page Installation Drawings for details.
3. Eye/face wash streams do not meet desired eye level.	3. Possible blocked flow control, see above solution. Possible non-leveled eye/face wash assembly
4. Water does not drain properly.	4. Check the main waste line of your building to see if it does handle the capacity required for the entire drainage system.

For more information about GalvinSafe[®] (Haws) products, see our website.



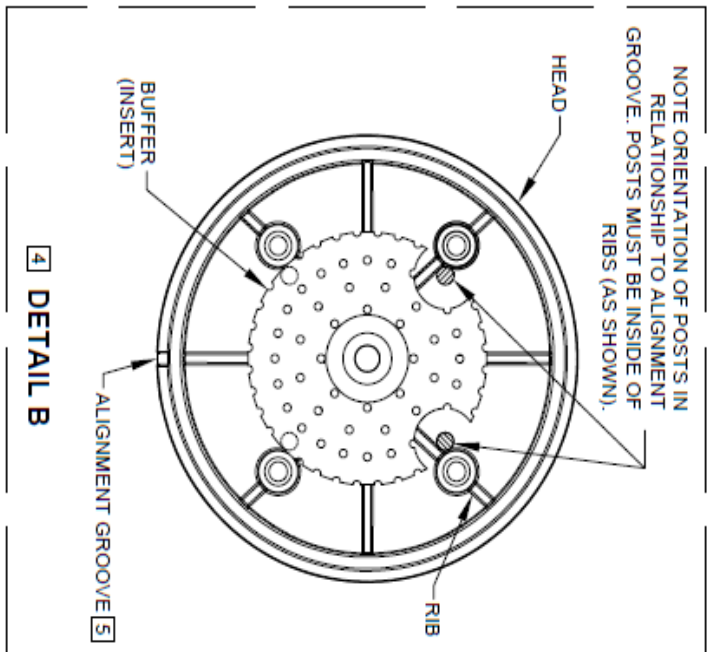
FLOW CONTROL SHOWN IN PLACE

3 DETAIL A



FLOW CONTROL CLEANING STEPS:

- 1 UNSCREW EYEFACE WASH ASSEMBLY FROM ADAPTER (NOT SHOWN).
- 2 REMOVE SCREWS (QTY. 4) FROM SP65 EYEFACE WASH ASSEMBLY. REMOVE EYEFACE WASH HEAD AND BUFFER (INSERT).
- 3 REMOVE EXISTING FLOW CONTROL FROM BASE BY PUSHING IT OUT FROM THE TOP, AND CAREFULLY REMOVE ANY DEBRIS LODGED BETWEEN O-RING AND HOUSING OR OPENINGS. ALSO, CHECK FOR ANY SEDIMENT OR MINERAL DEPOSITS BLOCKING OPENINGS. EXERCISE CAUTION NOT TO DAMAGE OR LOSE O-RING IN THE PROCESS. ALL OPENINGS ON FLOW CONTROL MUST BE FREE AND CLEAR OF ANY OBSTRUCTIONS FOR FLOW CONTROL TO FUNCTION PROPERLY. REINSTALL FLOW CONTROL. SEE DETAIL A FOR ORIENTATION.
- 4 INSERT BUFFER (INSERT) INTO EYEFACE WASH HEAD NOTING ORIENTATION OF POST IN RELATIONSHIP TO ALIGNMENT GROOVE AS SHOWN ON DETAIL B.
- 5 REASSEMBLE EYEFACE WASH HEAD. MAKING SURE THAT ALIGNMENT GROOVE ON EYEFACE WASH HEAD LINES UP WITH ALIGNMENT TAB ON BASE.
- 6 REINSTALL SCREWS (QTY. 4) INTO THE EYEFACE WASH ASSEMBLY. TIGHTEN SNUG TO ENSURE A WATERTIGHT SEAL. DO NOT OVER-TIGHTEN. TORQUE SPEC: 4 IN. LBS. MAX
- 7 REASSEMBLE 190.92.12.10 EYEFACE WASH ASSEMBLY ONTO ADAPTER (NOT SHOWN). ORIENT TAB TOWARDS THE BACK (AWAY FROM USER). DO NOT OVER-TIGHTEN.
- 8 PLACE DUST COVER (NOT SHOWN) ONTO EYEFACE WASH.



4 DETAIL B

SEE SHEET 1 OF 2 FOR INSTALLATION/RETROFIT STEPS

DISTRIBUTED BY:
GalvinEngineering
the mark of reliability

418 VICTORIA RD WILMUNA WA
 PH: 8 9338 2344 FAX: 8 9338 2340
 EMAIL: sales@galvinengineering.com.au
 WEBSITE: www.galvinengineering.com.au

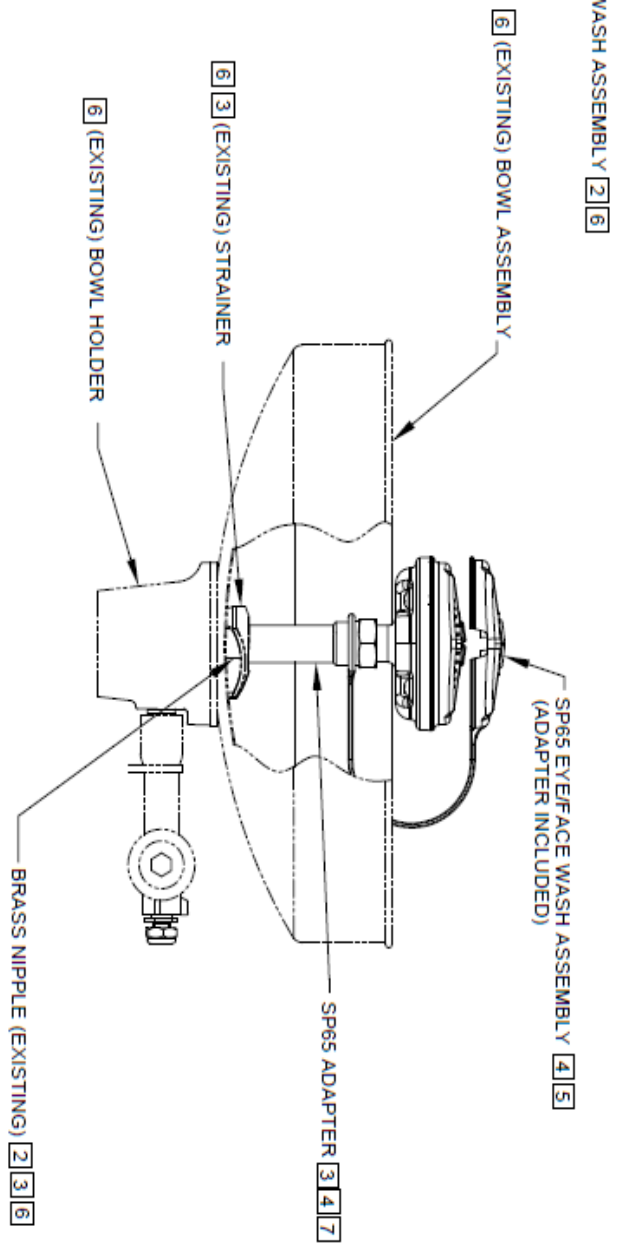
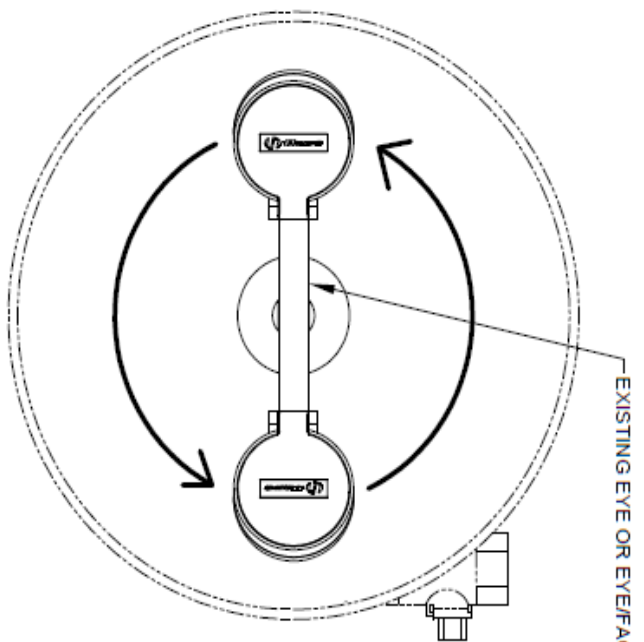
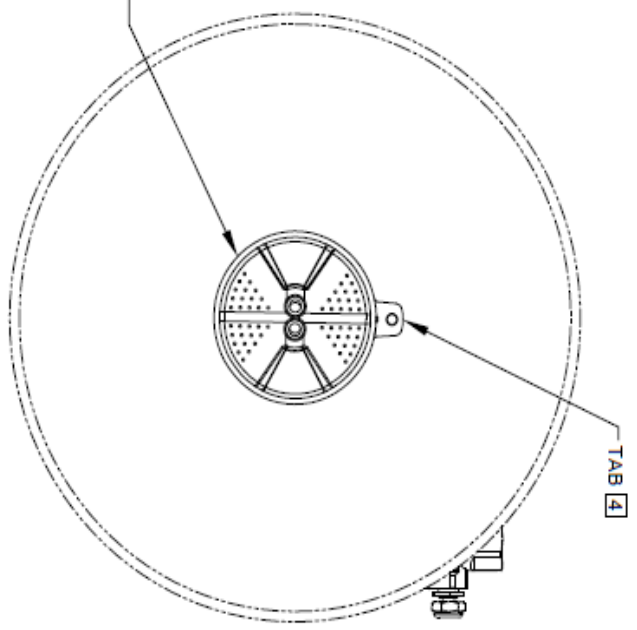


BEN NO. REGISTERED PARTS: 4108 DRAWN: DATE: CHKD: 1 APPROVED: DATE:	MODEL(S) 190.92.12.10 (SP65) GALVINSAFE AXION MSR EYEFACE WASH HEAD (HAW5)	PART NUMBER 0002077031 DRAWING NO. 15342A00 REV 8
SCALE: 5/8 DRAWING TYPE: METALLIZATION	SHEET: 2 OF 2	

INSTALLATION/ RETRO FIT STEPS

1. IF REPLACING AN EXISTING EYEWASH ASSEMBLY WITH SP65 FOLLOW STEPS 2 THROUGH 5 AND IF INSTALLING SP65 ON NEW UNIT FOLLOW STEPS 3 THROUGH 5 (IF APPLICABLE).
NOTE: NOT FOR USE ON ANY FREEZE RESISTANT UNIT; i.e. 8300FP, 8300, 158, 7433FP, 8317CTFP, 8317CTFP.220V, AND 8317CTFP.C1D1.
2. REMOVE EXISTING EYEWASH BY SPINNING EYEWASH TEE COUNTER CLOCKWISE. DO NOT REMOVE BRASS NIPPLE FROM BOWL HOLDER.
3. PLACE SP65 ADAPTER THROUGH DUST COVER LOOP. THREAD SP65 ADAPTER ONTO BRASS NIPPLE UNTIL SNUG AGAINST STRAINER.
4. THREAD SP65 ONTO ADAPTER. ORIENT TAB TOWARDS THE BACK (AWAY FROM USER). DO NOT OVER-TIGHTEN.
5. PLACE DUST COVER ONTO EYEFACE WASH
6. EXISTING COMPONENTS SHOWN (TYPICAL MODEL) ARE FOR REFERENCE ONLY AND MAY NOT REPRESENT YOUR SPECIFIC UNIT.
7. ADAPTER SUPPLIED WITH SP65 MAY NOT BE REQUIRED IN SOME APPLICATIONS.

EYEFACE WASH HEAD SHOWN WITHOUT DUST COVER



SEE SHEET 2 OF 2
FOR FLOW CONTROL
CLEANING STEPS



DISTRIBUTED BY:
GalvinEngineering
the mark of reliability

410 VICTORIA RD MALAKA WA
APT 78 008 719 382
+61 8 9338 2344 FAX: +61 8 9338 2340
EMAIL: sales@galvinengineering.com.au
WEBSITE: www.galvinengineering.com.au

DRAWING NO. 0002077031		PART NUMBER	
REVISED DATE 15/3/2010		DRAWING NO. 15342A00	
REVISED BY 8		REVISED BY 8	
SCALE 1:18		DRAWING TYPE INSTALLATION	
DATE		SIZE A	
APPROVED		SHEET 1 OF 2	
DRAWING DATE		CHECKED	
DATE		DATE	
SCALE 1:18		DRAWING TYPE	
MODEL(S)		GALVINSAFE AXION MSR EYEFACE WASH HEAD (HAW5)	
190.92.12.10 (SP65)		GALVINSAFE AXION MSR EYEFACE WASH HEAD (HAW5)	
190.92.12.10 (SP65)		GALVINSAFE AXION MSR EYEFACE WASH HEAD (HAW5)	
190.92.12.10 (SP65)		GALVINSAFE AXION MSR EYEFACE WASH HEAD (HAW5)	

WARRANTY

The warranty set forth herein is given expressly and is the only warranty given by the Galvin Engineering Pty Ltd. With respect to the product, Galvin Engineering Pty Ltd makes no other warranties, express or implied. Galvin Engineering Pty. Ltd. hereby specifically disclaims all other warranties, express or implied, including but not limited to the implied warranties of merchantability and fitness for a particular purpose.

Galvin Engineering Pty Ltd products are covered under our manufacturer's warranty available for download from www.galvinengineering.com.au Galvin Engineering Pty Ltd expressly warrants that the product is free from operational defects in workmanship and materials for the warranty period as shown on the schedule in the manufacturer's warranty. During the warranty period, Galvin Engineering will replace or repair any defective products manufactured by Galvin Engineering without charge, so long as the terms of the Manufacturer's warranty are complied with.

The remedy described in the first paragraph of this warranty shall constitute the sole and exclusive remedy for breach of warranty, and Galvin Engineering Pty Ltd shall not be responsible for any incidental, special or consequential damages, including without limitation, lost profits or the cost of repairing or replacing other property which is damaged if this product does not work properly, other costs resulting from labour charges, delays, vandalism, negligence, fouling caused by foreign material, damage from adverse water conditions, chemical, electrical or any other circumstances over which Galvin Engineering has no control. This warranty shall be invalidated by any abuse, misuse, misapplication, improper installation or improper maintenance or alteration of the product.

Within Australia: 1300 514 074 Outside Australia: P: +61 (0)8 9338 2344

F: +61 (0)8 9338 2340

sales@galvinengineering.com.au

www.galvinengineering.com.au

ABN: 78 008 719 382

PERTH | SYDNEY | MELBOURNE | BRISBANE | ADELAIDE

